

## Mounting Instructions

# mobilityRDO™

REAR DOOR OPENER





Part no. 14000

Part no. 61590

Part nos.  
61595 Merc. Sprinter  
61598 Opel Vivaro  
61631 Fiat Ducato  
61591 Ford Transit  
61597 Ren. Master  
61599 Merc. Vito



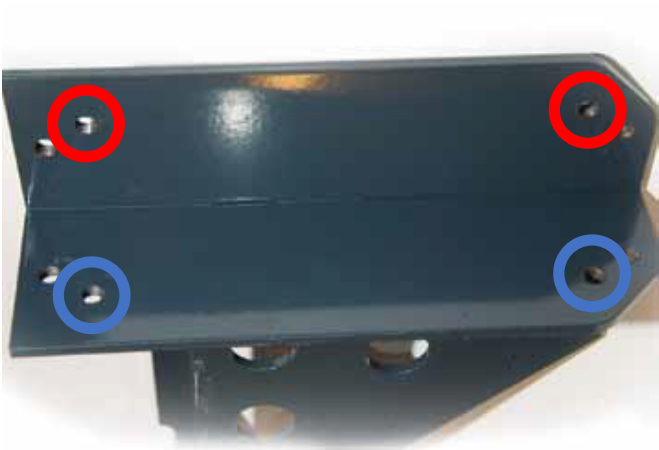
1 / 14

Take off the covers.



2 / 14

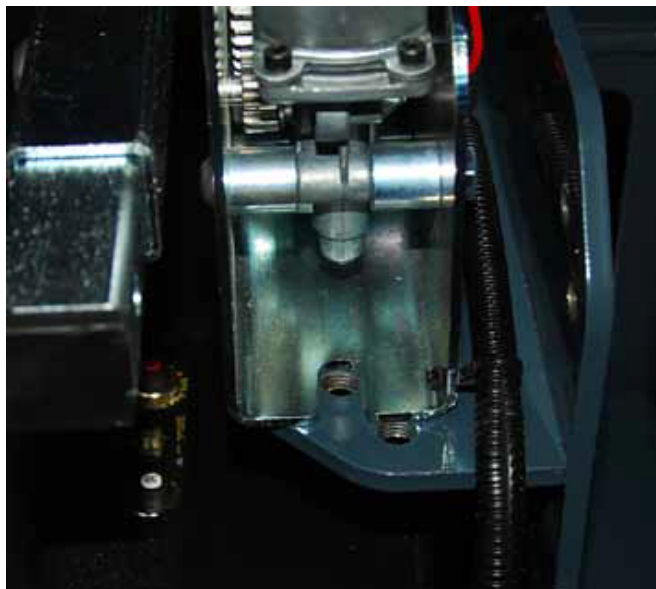
Use outer holes.  
For vertical mounting.  
For horizontal mounting.



## 3 / 14

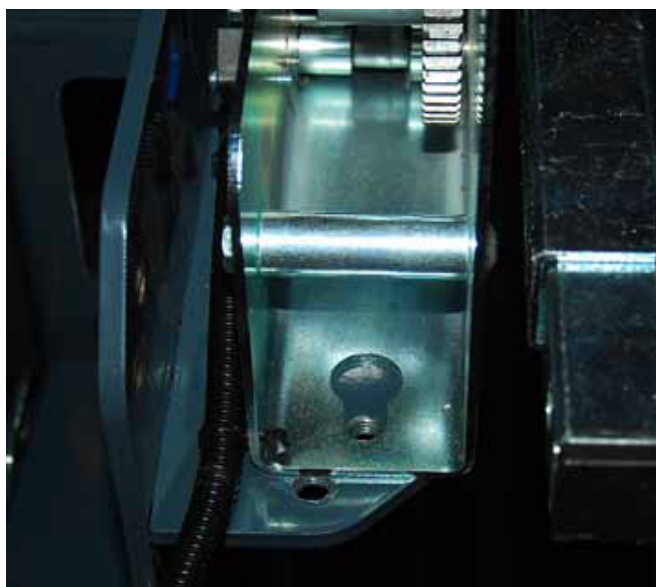
The two door openers are identical; when mounted, they will **not** mirror each other.

Bolts come with the bracket. **Part no. 61590**



## 4 / 14

In these two photos, you see the two door openers from behind. Correctly mounted but facing opposite directions.

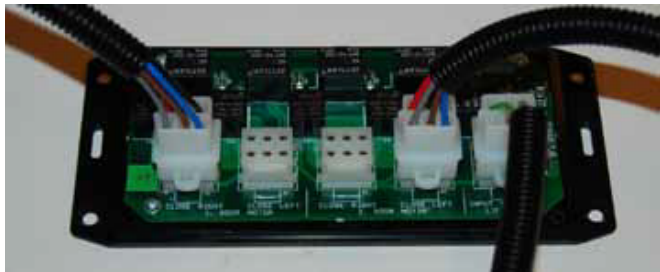
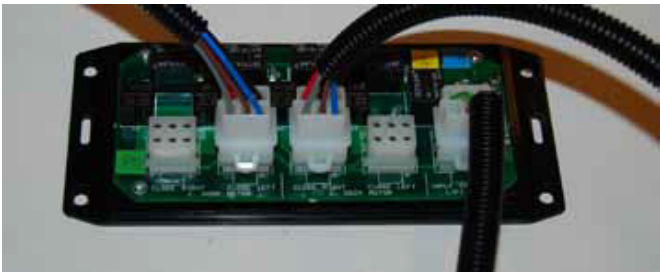


5 / 14

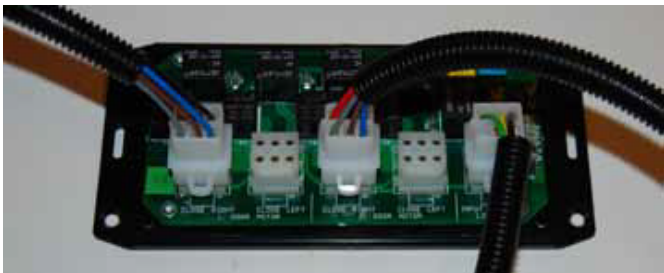
The signal cable always goes here.



6 / 14



7 / 14



8 / 14

Place somewhere  
suitable when  
assembled.





9 / 14

Bolt, arm and distance  
piece assemblies like  
this.



10 / 14

Mount the arm here.



11 / 14

Connect the arm from the door opener (left hand) to the arm from the bracket (right hand). The latter comes from the **Brackets for door opener** set (not included). Note, the brackets vary by model of car.



12 / 14

Adjustable: 30mm.





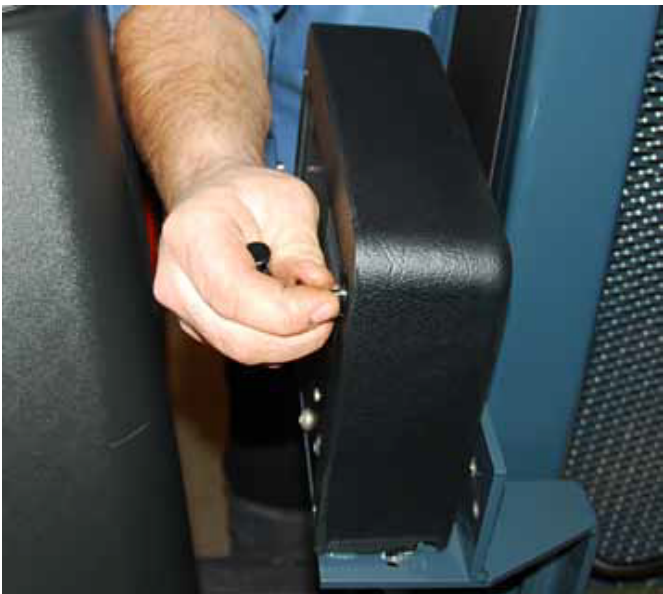
13 / 14

Adjust switches with a 10mm wrench. The switches are deliberately set so that you must adjust them.



14 / 14

Covers back on and you're done.





Dealer:



12 Estuary View Business Park  
Whitstable  
Kent  
United Kingdom  
CT5 3SE

+44(0)1227 505022  
[info@mobilitynetworksgroup.com](mailto:info@mobilitynetworksgroup.com)